

# DRUMS

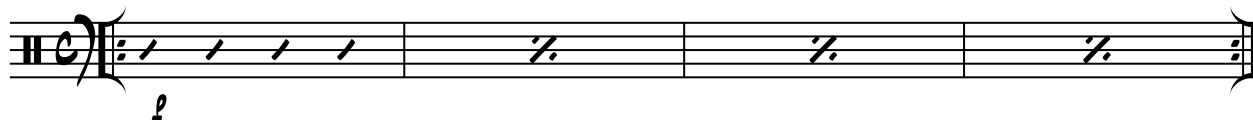
## THE MELTING POT

COMP. BY FREDDIE HUBBARD

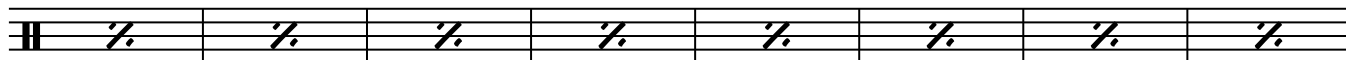
ARR. BY D. GARDNER

FUNKY STRAIGHT EIGHTH FEEL, ♩ = 132

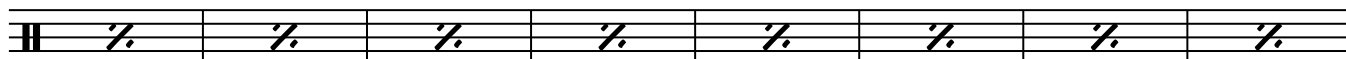
INTRO  
LATIN



(A)

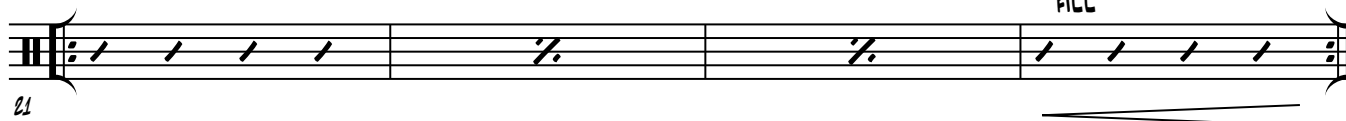


5 *mp*  
(B)



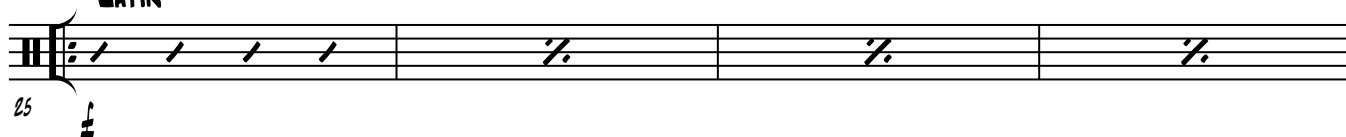
13

(C)



21

(D)



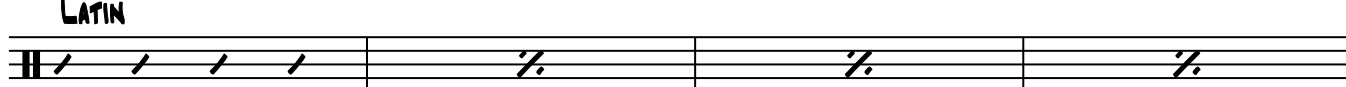
25

(E)



29

(F)



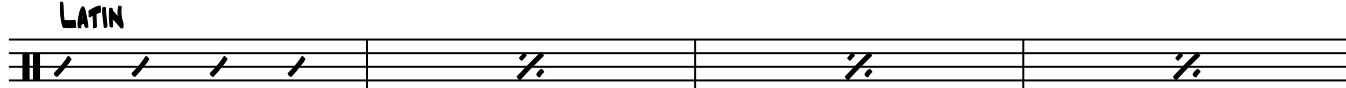
33

*mp*



37

(F)



41

*f*

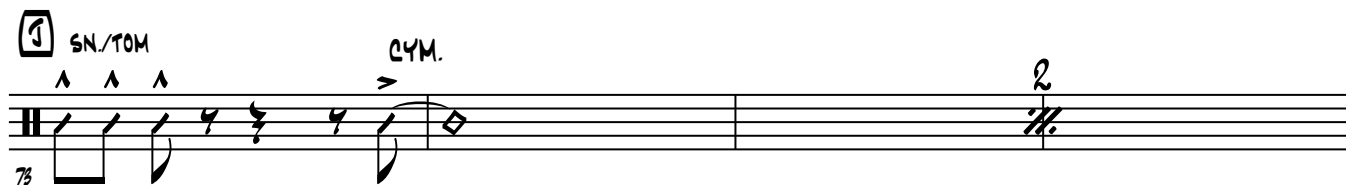


**G** TRUMPET SOLO  
LATIN



**I**

LATIN



# THE MELTING POT

## K TENOR SAX SOLO

81

SN./TOM

CYM.

85

SN./TOM

SN./TOM

SN./TOM

CYM.

89

## L

97

## M

105

SN./TOM

CYM.

109

SN./TOM

SN./TOM

SN./TOM

CYM.

## O TROMBONE SOLO

113

LATIN

117

CYM.

CYM.

CYM.

FILL

## P

121

SN./TOM

CYM.

2

SN./TOM      SN. CYM.      SN. CYM.      SN./TOM      CYM.

125

**Q** LATIN

129

**R**

SN./TOM      CYM.

137

SN./TOM      SN. CYM.      SN. CYM.      SN./TOM      CYM.

141

**S** PIANO SOLO  
LATIN

145

**T**

153

**U**

161

# THE MELTING POT

## V ENSEMBLE SHOUT

