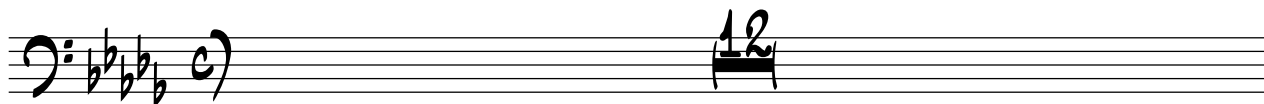


TROMBONE

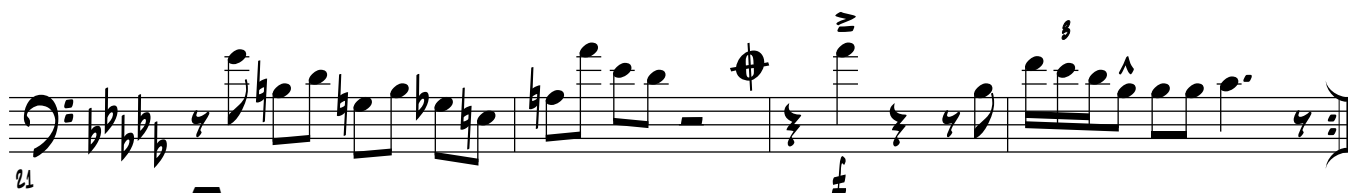
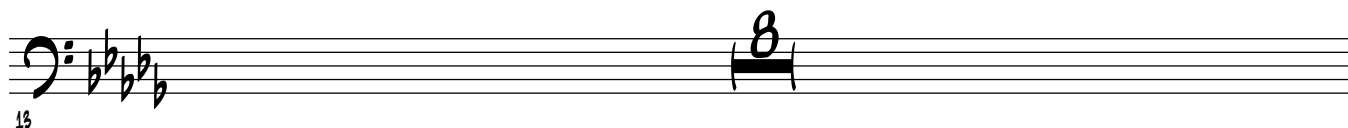
THE JOOY GRIND

COMP. BY HORACE SILVER
ARR. BY DERRICK GARONER

BUGALOO ♩ = 130 - 135



(A)



(B)

OPEN SOLOS

Bb-9



Eb7

Bb-9



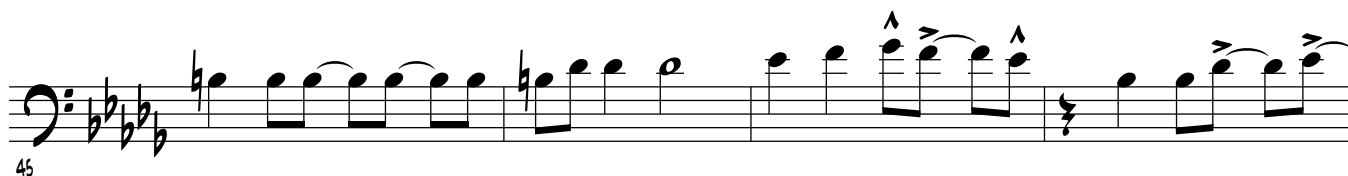
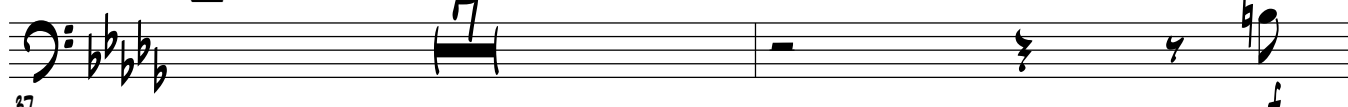
A7

B7

Bb-9



(C)




45

49

[illegible]

05

The musical score for 'The Rose Tree' is written for a single melodic line in bass clef. The key signature has three flats (B-flat, E-flat, A-flat), and the time signature is 4/4. The melody begins with a whole rest, followed by a half note G2, a quarter note F2, a quarter note E2, and a quarter note D2. This is followed by a half rest, then a half note C2, a quarter note B1, a quarter note A1, and a quarter note G1. The piece concludes with a final whole rest.

69 

73

ON CUE!!!!