

## BARITONE SAXOPHONE


**UNITED**

COMP BY WAYNE SHORTER  
ARR. BY DERRICK GARDNER

**♩ = 200**

♩ = 200

**A**



**1st**

2ND



20 

**1st**

 $2\text{NO}$ 

1ST

2ND

33


**BASS SOLO**

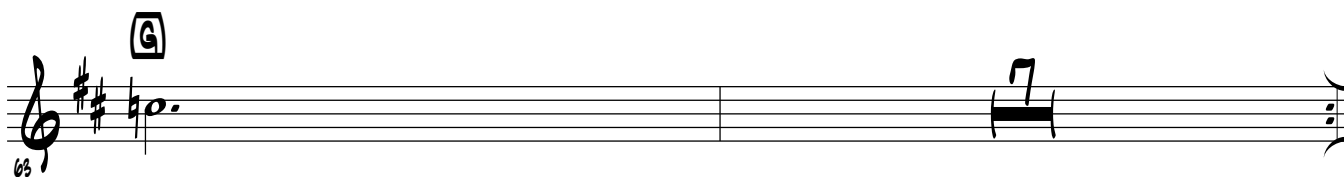
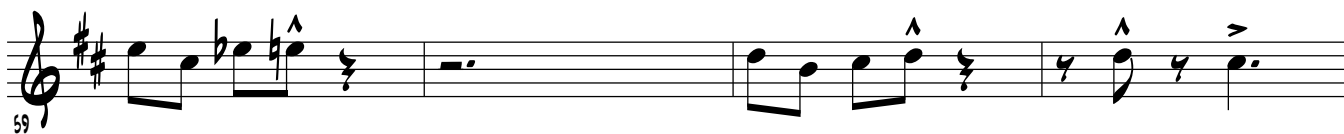
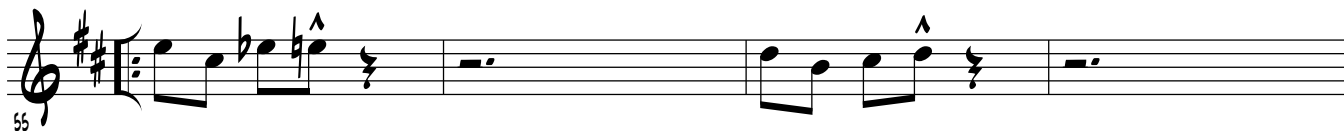
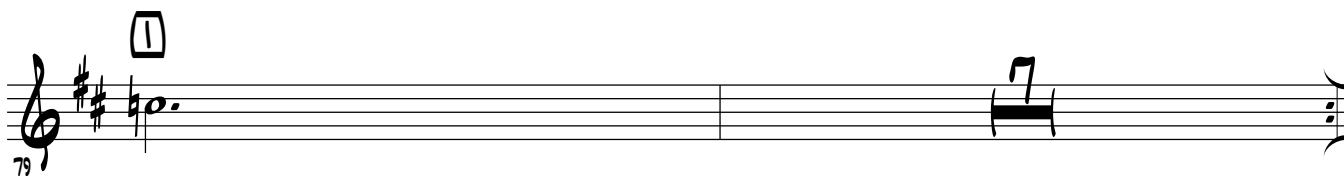
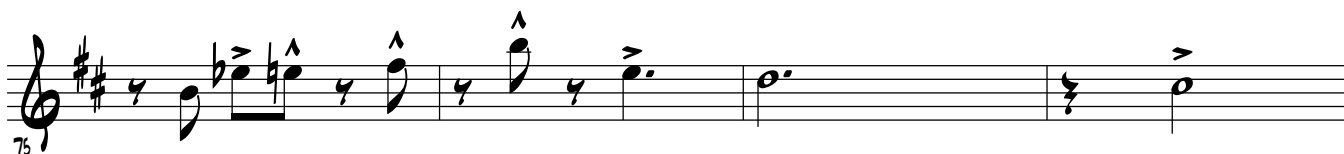
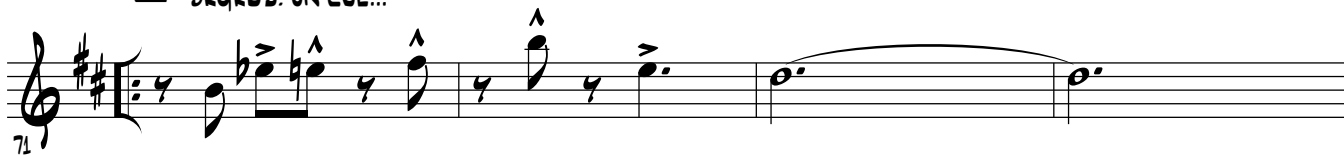
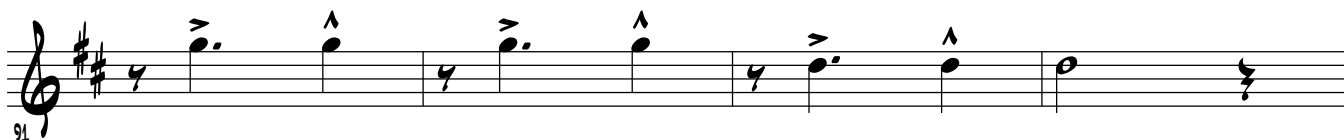
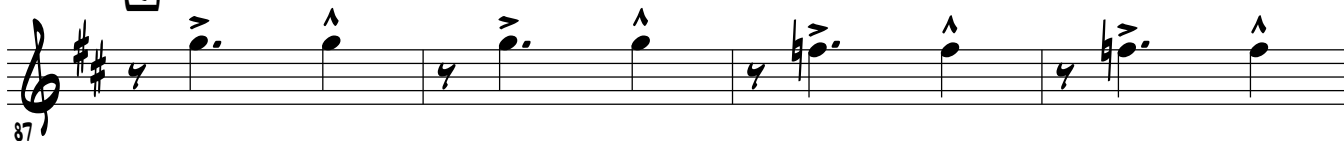
1ST X ONLY



39 **BASS SOLO** **E**

1ST X ONLY



**F** TENOR SAX SOLO  
BKGDS. ON CUE!!!**H** ALTO SAX SOLO  
BKGDS. ON CUE!!!**J** ENSEMBLE SHOUT

95

**K**

Staff 95-98: Treble clef, key of D major (two sharps). Measures 95-98 contain eighth-note quartets. Measure 95: D4, E4, F#4, G4. Measure 96: A4, B4, C#5, D5. Measure 97: E5, F#5, G5, A5. Measure 98: B5, C#6, D6, E6. Each quartet is beamed together with a '4' above it.

99

Staff 99-102: Treble clef, key of D major. Measures 99-102 contain eighth-note quartets. Measure 99: F#4, G4, A4, B4. Measure 100: C#5, D5, E5, F#5. Measure 101: G5, A5, B5, C#6. Measure 102: D6, E6, F#6, G6. Each quartet is beamed together with a '4' above it.

103

**L**

Staff 103-106: Treble clef, key of D major. Measures 103-106 contain eighth-note pairs with accents. Measure 103: D4, E4. Measure 104: F#4, G4. Measure 105: A4, B4. Measure 106: C#5, D5. Each pair is beamed together with an accent (^) above it.

107

Staff 107-110: Treble clef, key of D major. Measures 107-110 contain eighth-note pairs with accents. Measure 107: E4, F#4. Measure 108: G4, A4. Measure 109: B4, C#5. Measure 110: D5, E5. Each pair is beamed together with an accent (^) above it.

111

**M**

Staff 111-114: Treble clef, key of D major. Measures 111-114 contain eighth-note quartets. Measure 111: F#4, G4, A4, B4. Measure 112: C#5, D5, E5, F#5. Measure 113: G5, A5, B5, C#6. Measure 114: D6, E6, F#6, G6. Each quartet is beamed together with a '4' above it.

115

Staff 115-118: Treble clef, key of D major. Measures 115-118 contain eighth-note quartets. Measure 115: D4, E4, F#4, G4. Measure 116: A4, B4, C#5, D5. Measure 117: E5, F#5, G5, A5. Measure 118: B5, C#6, D6, E6. Each quartet is beamed together with a '4' above it.

119

**N**

Staff 119-122: Treble clef, key of D major. Measures 119-122 contain eighth-note pairs with accents. Measure 119: D4, E4. Measure 120: F#4, G4. Measure 121: A4, B4. Measure 122: C#5, D5. Each pair is beamed together with an accent (^) above it.

123

Staff 123-126: Treble clef, key of D major. Measures 123-126 contain eighth-note pairs with accents. Measure 123: E4, F#4. Measure 124: G4, A4. Measure 125: B4, C#5. Measure 126: D5, E5. Each pair is beamed together with an accent (^) above it.

127

130

133

135

**(P)** OPEN DRUM SOLO  
1ST X ONLY

**D.S. AL CODA**

139

143

**13**

(DRUMS)

RIT.

COND.